

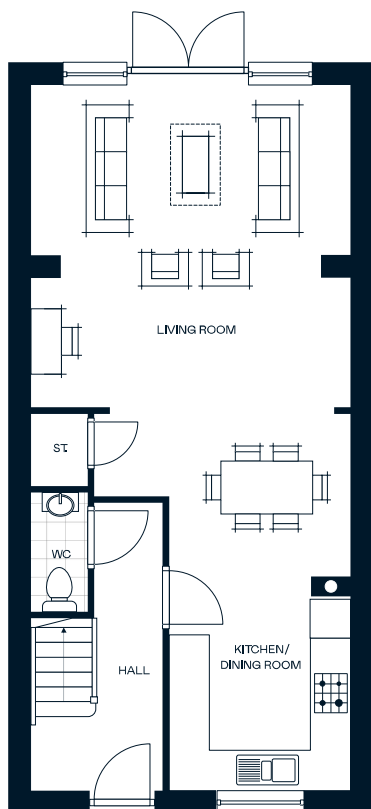
GALION

St. Dunstan's Mede Baltonsborough



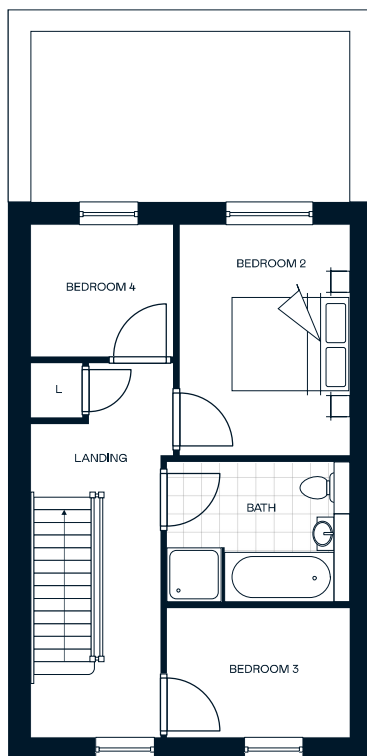
Homes 9, 10 & 11 are wonderfully crafted family homes offering everything to be expected from a Galion home. An extensive open plan living area offers the perfect space for a family or to entertain guests. Set over two and a half floors these 4 bedroom homes have ample accommodation with good sized rooms. On the 2nd floor, the Master Suite includes a beautiful bathroom with walk-in shower and plentiful storage space.

Externally the property has private allocated parking to the front and rear and a lawned garden which includes a flagstone terraced area.



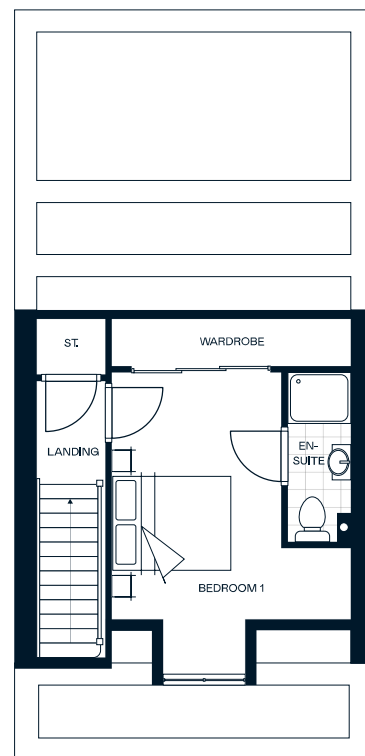
Ground Floor

Kitchen/Dining	2.83m x 5.85m
Living Room	4.96m x 5.03m



First Floor

Bedroom 2	2.64m x 3.58m
Bedroom 3	2.83m x 2.03m
Bedroom 4	2.24m x 2.05m



Second Floor

Bedroom 1	2.68m x 3.97m
-----------	---------------

Please note: Home 10 is handed. All dimensions given are approximate and are shown width x length.

Site Plan

St. Dunstan's Mede,
Baltonsborough,
Somerset
BA6 8FN

